

KIT LIST

Lenses

PRIME LENS SETS

- Arri Ultra Prime PL Lenses T1.9 (16, 24, 32, 50, 85, 100mm)
- Zeiss SuperSpeed MkII PL Lenses T1.3 (18, 25, 35, 50, 85mm)
- Canon CN-E Prime EF Lenses T1.3 - 3.1 (14, 24, 35, 50, 85, 135mm)
- Zeiss CP2 Prime PL/EF Lenses T2.1 - 3.6 (18, 25, 35, 50, 85mm)
- Sony VDSLR EF Prime Lens f/1.5-3.1 (14, 24, 35, 50, 85, 135mm)
- Panasonic Olympus MFT Lenses f/1.5-3.1 (12, 17, 24, 45mm)
- TLS PL Doubler

PL ZOOMS

- Canon CN20 50-100mm PL T5.8-9"
- Canon CN10 25-250mm PL T2.95-3.95"
- Canon CN7 17-120mm PL T2.95-3.9"
- Angenieux EZ 15-40mm S35 PL Lens T2
- Angenieux EZ 30-90mm S35 PL Lens T2
- Angenieux EZ 22-60mm FF PL Lens T2
- Angenieux EZ 45-135mm FF PL Lens T2
- Tokina 11-16mm PL Lens T3

B4

- Canon CJ25 EX7.68 2/3" ENG 4k Lens f/1.8-2.9
- Canon CJ12 EX4.38 2/3" ENG 4k Lens f/1.8-2.4

EF

- Sigma 18-35mm EF Lens T2
- Sigma 50-100mm EF Lens T2
- Canon CNE 18-80mm IS EF Lens T4.4

- Canon 14mm L Series EF Lens f/2.8
- Canon 24mm L Series EF Lens f/1.4
- Canon 35mm L Series EF Lens f/1.4
- Canon 50mm STM EF Lens f/1.8

- Canon 50mm L Series EF Lens f/1.2
- Canon 50mm STM (FF) F1.8, EF (FT: 49mm)
- Canon 85mm L Series EF Lens f/1.2
- Canon 85mm USM IS EF Lens f/3.5
- Canon 100mm L Series EF Macro Lens f/2.8
- Canon 180mm Macro USM EF Lens f/3.5

- Canon 8-15mm EF Lens f/4
- Canon 11-24mm USM EF Lens f/4.0
- Canon 16-35mm EF Lens f/2.8
- Canon 24-70mm EF Lens f/2.8
- Canon 24-105mm IS EF Lens f/4
- Canon 70-200mm IS EF Lens f/2.8
- Canon 100-400mm IS EF Lens f/4.5-5
- Sigma 18-35mm DS HSM Art EF Lens f/1.8

- Canon EF x2 Doubler
- Tokina 11-16mm EF Lens f/2.8

E

- Sigma 18-35mm (S35) T2.0, E (OD: 95mm)
- Sigma 50-100mm (S35) T2.0, E (OD: 95mm)

- Fujinon MK 18-35mm Lens T2.9
- Fujinon MK 50-135mm Lens T2.9

- Sony 16-35mm FE Lens f/2.8
- Sony 24-70mm GM E Lens f/2.8
- Sony 24-105mm GM E Lens f/4
- Sony 70-200mm GM E Lens f/2.8
- Sony 2X SEL20TC E Lens Extender
- Sony 18-110mm G Lens f/4
- Sony 28-135mm G f/4
- Sony 14mm GM E Lens f/1.8
- Sony 24mm FE Lens f/1.4
- Sony 35mm GM E Lens f/1.4
- Sony 28mm FE Wide Angle f/2
- Sony 50mm GM E Lens f/1.2

- Sony 85mm GM E Lens f/1.4
- Sony 90mm Macro E Lens f/2.8
- Sony 100mm GM E Lens f/1.8

- Sigma ART 20mm E Lens f/1.4
- Sigma ART 35mm E Lens f/1.4
- Sigma ART 50mm E Lens f/1.4
- Sigma ART 85mm E Lens f/1.4
- Sigma ART 18-35mm E Lens f/1.8

MICRO FOUR THIRDS

- DJI 15mm (MFT) F1.7, MFT
- Olympus M.Zuiko 12mm MFT Lens f/2
- Olympus M.Zuiko 17mm MFT Lens f/1.8
- Olympus M.Zuiko 25mm MFT Lens f/1.8
- Olympus M.Zuiko 45mm MFT Lens f/1.8
- Panasonic Lumix 12-60mm MFT Lens f/3.5-5.6
- Panasonic Lumix 14-42mm MFT Lens f/3.5

Specialist

- Loawa 24mm Probe EF Lens f/14
- Loawa 24mm Probe PL Lens f/14

Cameras

SUPER 35

- RED Helium DSMC2
- RED Gemini 5K DSMC2 / SSD
- ARRI Alexa Mini Kit (Anamorphic and RAW License) | CFast
- ARRI Alexa Mini Kit | CFast
- ARRI Amira Premium Kit | CFast
- Sony PMW-F55 Kit | SXS
- Sony FXW-F57 MKII Kit | XQD
- Sony FXW-F57 Kit | XQD
- Sony FXW-F55 MKII Kit | SD
- Sony FXW-F55 Kit | SD
- Canon C700 MK1 | CFast
- Canon EOS C300 MkII (EF Mount) Kit | CFast
- Canon EOS C300 (EF Mount) Kit | CF

FULL FRAME

- Sony VENICE CineAlta Full Frame 6k with R7 RAW Recorder Kit | AXS/SXS
- Sony FXW-FX9 Kit | XQD
- Sony FXW-FX6 Kit | XQD
- Sony ILME-FX3

2/3"

- Sony FXW-Z750 4k Kit | SXS
- Sony FXW-Z450 4k Kit | SXS

SPECIALIST

- Canon ME20F-5H (EF & PL Mount) Kit
- Sony FXW-Z150 Camcorder Kit / SD
- Sony FXW-X70 4K Camcorder / SD

DSLR / Mirrorless

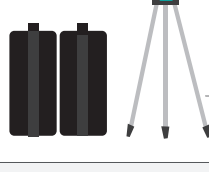
- Sony A7S MKIII
- Sony A7s MKII Kit | SD
- Canon EOS 5D MKIII Kit | CF
- Panasonic Lumix GH5 Kit with V-LOG / SD
- Panasonic Lumix GH4 Kit | SD

STABILISED

- DJI Osmo Pro X5 Kit | Micro SD
- DJI Osmo + | Micro SD
- DJI Osmo X3 Kit | Micro SD
- DJI Osmo Pocket 2

Mini Cams

- GoPro MAX | Micro SD
- GoPro Fusion | Micro SD
- Sony DSC-RX02M2 | Micro SD
- GoPro Hero 9 Black | Micro SD
- GoPro Hero 7 Black | Micro SD
- GoPro Hero 6 Black | Micro SD
- GoPro Hero 5 Black | Micro SD
- GoPro Hero Session | Micro SD



- LG 55"OLED 4K UHD HDR TV
- Samsung 40" 4K HDR TV
- Samsung 32" 4K TV
- + Various TVs available for gallery use ranging from 30 - 55"
- Canon DP-V2410 Grade 1 24" Monitor/LG 55 inch
- TV Logic LVM-1815 18.5" Monitor with Production Flightcase
- TV Logic LVM-1715 17" Monitor
- Sony LMD 741 7.4" OLED Monitor
- Zacuto Gratical OLED Electronic Viewfinder
- Zacuto Gratical HD Electronic Viewfinder

- SmallHD 703 Monitor (with built in Sidekick 500 1 x Transmitter) *
- SmallHD INDIE 7 Monitor/Bolt 4K RXTV
- SmallHD FOCUS 7 Monitor (with built in Sidekick 500 & 1 x Transmitter)*
- SmallHD 702 Bright Monitor *
- SmallHD 502 Monitor *
- SmallHD 503 Ultrabright

- Teradek Bolt XT 500 (1 x Transmitter & 1 x Receiver)
- Teradek Bolt Pro (1 x Transmitter & 1 x Receiver)
- Boxx Atom (1 x Transmitter & 1 x Receiver)

*Supplied with wooden Camera Monitor Cage and Batteries

Monitoring

SUPPORT

- Manfrotto 425B Mega Boom
- Avenger Boom Arm Junior D650 and Weight
- Easyrig Vario 5 with Cineflow Serene
- Easyrig MiniMax
- Ronford Baker Rolling Spider
- Cine Saddle
- Cine Saddle Mini
- Matthews Apple Boxes
- C-Stand Trolley (6 x C-Stands with Flag Arm & Knuckle)
- Magliner Film Truck
- EZ-UP Pop Up Gazebo

SLIDERS

- Ronford Baker 40" Slider | 1m
- Prosop Tango Roller Slider | 2.2m
- Wally Dolly Track and Dolly Kit | 4m
- Kessler Cine Slider | 1m
- Egripment Focus Dolly (Curved & straight track) | 10m+
- Konova Camera Slider | 1.2m

ACCESSORIES

- ARRI SMB-1 Production Mattebox
- ARRI LMB 4x5 Lightweight Mattebox
- Bright Tangerine VIV5 Mattebox Kit
- Bright Tangerine Misfit Atom Mattebox
- Canon ZSD-300D Zoom Demand
- Canon FPD-400 Focus Demand

- ARRI WCU-4 Integrated Wireless Lens Control System
- DJI Wireless Follow Focus
- ARRI FF5 Follow Focus
- ARRI FF-T05 Single Sided Follow Focus
- Shape Moose Hand Grips

Filters

- Tiffen Polariser | 4 x 5.65
- Tiffen Polariser | 4 x 4
- Tiffen IRND Filters (.3 .6 .9 1.2) | 4 x 5.65

- Tiffen Soft Edge Grads (.3 .6 .9 1.2) | 5.65 x 5.65
- Tiffen Hard Edge Grads (.3 .6 .9 1.2) | 4 x 5.65
- Tiffen Soft Edge Grads (.3 .6 .9 1.2) | 4 x 4
- Tiffen Hard Edge Grads (.3 .6 .9 1.2) | 4 x 4

- Tiffen White Pro-Mist (1/8, 1/4, 1/2, 1) | 4 x 4
- Tiffen Black Pro-Mist (1/8, 1/4, 1/2, 1) | 4 x 4

- Glimmer Glass (1/8, 1/4, 1/2, 1, 2) | 4 x 5.65

- Tiffen Variable ND 72mm Screw-In
- Tiffen Variable ND 77mm Screw-In
- Tiffen Variable ND 82mm Screw-In

Lighting

HMI

- Dedolight PanAura Octodome 5 * Kit
- ARRI M18 HMI Light with Hi-Speed Ballast
- ARRI M8 HMI Light with Hi-Speed Ballast

LED

- Astera Titan Tube 8-Way Kit
- ARRI Skypanel S-60C
- Kinoflo Select 30
- Aladdin BiFlex4 (4x1) Light Mat
- Dedolight DLED7-BI 3 head kit HMI
- Aputure LS C300d II Light Kit
- Aputure LS C120D MkII LED Video Light
- Aputure Spotlight Mount Set
- ARRI 575W HMI Daylight Light
- Fomex RollLite 2x1 RL21-75
- Litepanel Astra 6x 1x1" Bi-Colour
- Anova Pro 2 Bi-Colour Kit Roto Light Kit
- The Light Velvet 1x1" LED Panel
- Fomex 1x1 Flexi Light
- Fomex Liteball & Quick Frame for FL-600 Light
- Aladdin A-lite
- Aputure AL-MC RGBWW
- Litepanel Brick Bi-Colour
- F&V K4000 LED 3 Head 1x1" Bi-Colour Kit

TEXTILES, FRAMES & REFLECTORS

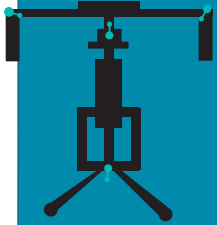
- 4x4 Trace Frame
- 8x8 Modular Frame
- 8x8 Full Black
- 8x8 Full Stop Silk White
- 8x8 Full Stop China Silk
- Flag Kit (12x18", 18x24", 24x36")
- Net Kit (Single, Double, Full Stop, Silk)
- 4x4 Floppy Flag (48x48)
- Westcott Fast Flags (18x24")
- 12x12" Black Drape
- 10x18 Reversible Blue/Green screen drape
- Lastolite Bottletop 5:1 Diffuser

TUNGSTEN

- ARRI T2 2000w Fresnel Light
- ARRI T1 1000w Fresnel Light
- ARRI 800w Openface Light
- ARRI Lite 750w+ Openface Light
- ARRI 650w+ Fresnel Light
- ARRI 300w Fresnel Light
- Dedolight 150w Kit (4 head)

* Comes with Tungsten fittings
Colour Correction and Cosmetic Gel bags available on request | Poly Boards as Consumable

Specialist Grip



- DJI Ronin 2
- DJI Ronin
- DJI Ronin MX
- DJI Ronin M
- DJI Ronin S

- Kessler Slider with Paralax and Oracle Timelapse Remote
- Syrrp Genie
- Hague MMS-1 Car Mount System
- Matthews Car Mount
- Hague SM3 Car Suction Mount
- DJI Ronin RS 2Ready Rig 30S gimbal support vest
- Ronin Magnetic Car Mount

AUDIO

- Sound Devices 604 Field Mixer & Recorder / SD & CF
- Sound Devices 633 Field Mixer & Recorder / SD & CF
- Sound Devices MixPre-3 II / CF
- Sennheiser HD-25 Headphones
- Sony VD150 Headphones
- Sennheiser AVX MKE2 Radio Mic Kit
- Sennheiser G4 Radio Mic Kit
- Sennheiser Mic SKP 100 G4 plug-on transmitter
- Sennheiser G3 EK 100 Radio Mic Kit (TX, RX)
- Sennheiser G3 SKP 100 Transmitter (Plug-in TX & RX)
- Sennheiser G3 IEM 2000 Receiver (Director's Listener)
- Sony K2M-XLR Module (for FS7 & A7s)
- Sony XLR-K3M Audio adaptor

- Zoom H5 Recorder
- Sennheiser MKE600 Shotgun Mic
- Sennheiser MKE2 ew XLR Lapel Mic
- Audio LTD A10 Dual Receiver Kit
- Sony UWP Dual Receiver Kit
- Timecode Systems ULTRASYNCH ONE
- Tentacle Timecode Sync-E TE2



DATA

- Macbook Pro 15" * * Comes with ShotPut Pro
- Macbook Pro 13" *
- Atomos Sumo 19 4k Monitor and Recorder
- Atomos Shogun Inferno 4k HDR Solid State Recorder
- Nexto NSB-25 (SXS | XQD | SD | CF | CFast)
- Blackmagic Web Presenter
- Teradek VIDIU Go HEVC / H.264 Encoder
- Blackmagic ATEM 1 M/E Production Studio 4K
- Blackmagic 12G 40x40 VideoHub
- Blackmagic 20x20 VideoHub
- Blackmagic 12x12 Cleanswitch
- Blackmagic Multiview 16
- Decimator Design DMON-12S 12 Channel Multiviewer
- Decimator DMON-QUAD
- Multiple Blackmagic Design Converters available

